

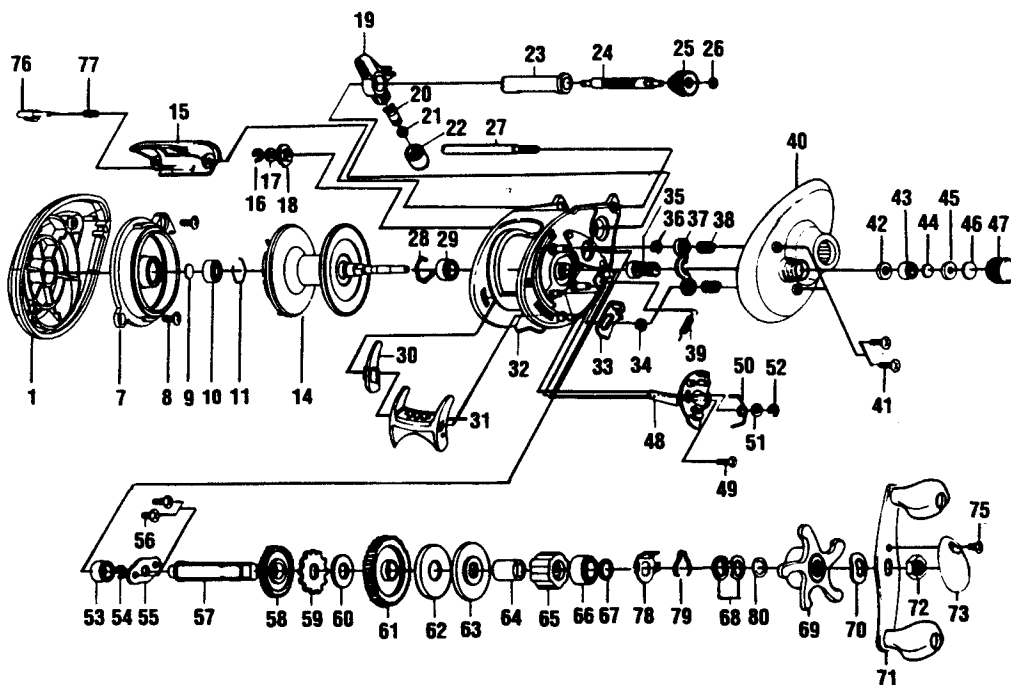
BROWNING VECTRA IV

SPECIFICATIONS:

- 3 Ball Bearings
- 1 Roller Bearing
- 5.1:1 Gear Ratio
- 8.9 oz. Weight
- 145 yds./14 lb. Line Capacity

FEATURES:

- 1 piece aluminum frame
- Thumb Bar Spool Release
- Titanium enhanced Pawl & Line guide
- Constant Anti-Reverse
- Bayonet Reverse (left side cover)
- Six post adjustable Centrifugal Brake System
- Color - Medium Grey



Key No.	Part No.	Description	Price	Key No.	Part No.	Description	Price
1	UW023-01	Left Side Cover	7.50	44	QW032-04	Spool Tension Washer	.52
7	UW051-01	Spool Cover Assy	1.75	45	QW081-01	Spool Tension Collar	.96
8	ZW125-01	Spool Cover Screw	1.00	46	QW082-01	Spool Cushion Washer	.67
9	QW032-04	Spool Tension Shim	.54	47	ZW033-01	Spool Tension Knob	5.00
10	UW017-01	Ball Bearing - Spool Shaft	6.80	48	ZW039-01	Release Slider	3.10
11	QW080-01	Clip Ring	.52	49	ZW053-01	Thumb Bar Screw	1.00
14	UW321-01	Spool Assy	19.00	50	ZW104-01	Release Slider Spring	1.00
15	ZW027-05	Front Support	2.88	51	SW121-01	Release Slider Guide Washer	.50
16	NX092-01	Worm Shaft E-Clip	.30	52	NX090-01	Release Slider Guide E-Clip	.41
17	QW035-03	Worm Shaft Washer	.26	53	ZW017-01	Crank Shaft Lower Bushing	.65
18	QW067-01	Worm Shaft Bushing	.67	54	QW120-01	Crank Shaft E-Clip	.26
19	ZW347-01	Line Guide Carrier Assy	5.70	55	ZW002-01	Crank Shaft Retainer	1.20
20	ZW006-01	Line Guide Pawl	2.80	56	TW107-01	Crank Shaft Retainer Screw	.10
21	QW035-03	Line Guide Pawl Washer	.26	57	ZW008-01	Crank Shaft	5.60
22	ZW007-01	Pawl Cap Screw	2.85	58	ZW112-01	Oscillate Drive Gear	1.55
23	ZW016-01	Worm Shaft Guide	2.00	59	QW083-01	Trip Ratchet	.36
24	ZW072-01	Worm Shaft	7.20	60	QW111-01	Trip Ratchet Washer	.26
25	ZW085-01	Oscillate Pinion Gear	1.75	61	ZW012-01	Drive Gear	10.90
26	NX090-01	Oscillate Pinion Gear E-Clip	.41	62	QW059-01	Drag Disc	1.70
27	ZW061-01	Stabilizer Bar	2.80	63	QW045-01	Drag "D" Washer	.82
28	QW080-01	Clip Ring	.52	64	QW052-02	One Way Bearing Sleeve	2.88
29	SW017-01	Ball Bearing - Spool Shaft	6.80	65	UQ063-02	One Way Bearing	9.27
30	ZW056-01	Thumb Bar Retainer	.50	66	TW058-01	Crank Shaft Ball Bearing	7.21
31	BV009-01	Thumb Bar	.70	67	TW035-02	Crank Shaft Washer	.46
32	ZW301-04	Frame Assy	6.00	68	QW046-02	Spring "D" Washer	.98
33	ZW077-01	Kick Lever	1.55	69	VW355-02	Star Drag Assy	1.25
34	QW120-01	Pinion Yoke Shaft E-Clip	.26	70	QW054-01	Handle Washer	.72
35	ZW311-01	Pinion Gear Assy	10.10	71	VW318-04	Handle Assy	12.95
36	QW120-01	Pinion Yoke Shaft E-Clip	.26	72	QW003-01	Handle Nut	.36
37	ZW025-01	Pinion Yoke	1.00	73	ZW034-01	Handle Nut Cap	1.00
38	QW040-01	Pinion Yoke Spring	.67	75	QW123-01	Handle Nut Cap Screw	.15
39	ZW097-01	Kick Lever Spring	.65	76	ZW119-02	Side Cover Locking Lever	1.00
40	ZW024-05	Right Side Cover	5.50	77	ZW096-01	Locking Lever Spring	1.00
41	QW123-01	Right Side Cover Screw	.15	78	ZW110-01	Drag Click Spring Retainer	1.00
42	QW101-01	Spool Tension Knob O-Ring	.26	79	ZW114-01	Drag Click Spring	1.00
43	QW117-01	Tension Knob Bushing	.64	80	ZW032-01	Star Drag Washer	1.25

MODEL INTRODUCED	1996	EFFECTIVE DATE OF PARTS LIST/DIAGRAM	Oct. 1996	DISCONTINUED	N/A
-------------------------	------	---	-----------	---------------------	-----

Prices subject to change without notice. Prices do not include postage and handling.

PLEASE ORDER BY PART NUMBER Zebco Division, Browning Corporation, Box 270, Titus, OK 74161 USA 918 821 8885

